



Ballona Creek Trash Interceptor Pilot Project Community Meeting

January 24, 2022

1

Agenda

- Overview of Trash Abatement Efforts
 - Current Efforts
 - Long-term Project
 - Interceptor Project
- Resident Concerns (Noise, Odor, Lighting, Pests)
- Updates Since September 2021 Meeting
- Next Meeting/Q&A



2

Trash Capture Comparison

Current Efforts

- 3 existing booms installed
- Other trash clean-up efforts: Trash Free project, "Don't Waste Beautiful" anti-littering campaign

(Long-Term) Trash Capture Project

- Automatic trash capture rack
- Construction Cost: \$14 million
- Rack capacity: TBD
- Estimated start of construction: Fall 2024

Interceptor Project

- Autonomous trash capture vessel (solar powered)
- Construction Cost: \$1.4 million
- Barge capacity: ~65 cubic yards
- Estimated deployment: Fall 2022



3

Ballona Creek Trash Abatement Project

• Location:

- Lincoln, Purdue, and Centinela

• Statistics:

- 2018-19 Storm Season: 37 tons
- 2019-20 Storm Season: 30 tons
- 2020-21 Storm Season (dry season): 10 tons
- 2021-22 Storm Season (to date): 26 tons

• O&M Considerations:

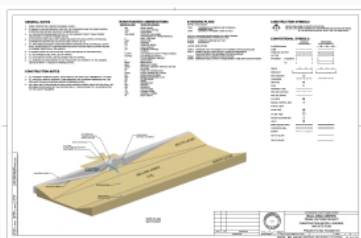
- Labor intensive, heavy equipment for trash cleanout, hauling to disposal site



4

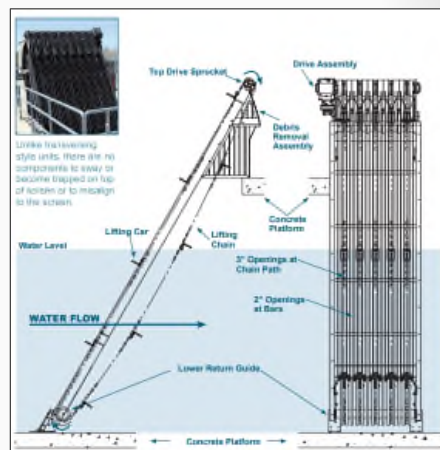
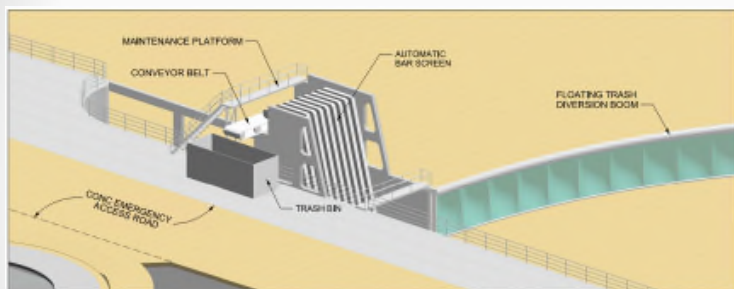
Ballona Creek Trash Capture Project

- Location: Alla Road (south)
- Components
 - Trash Rack
 - Boom
 - Overlook area



5

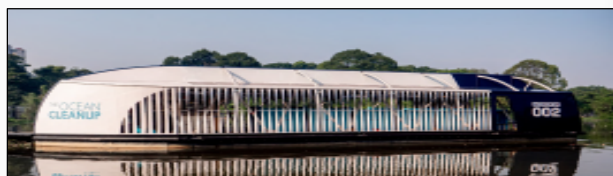
Ballona Creek Trash Capture Project



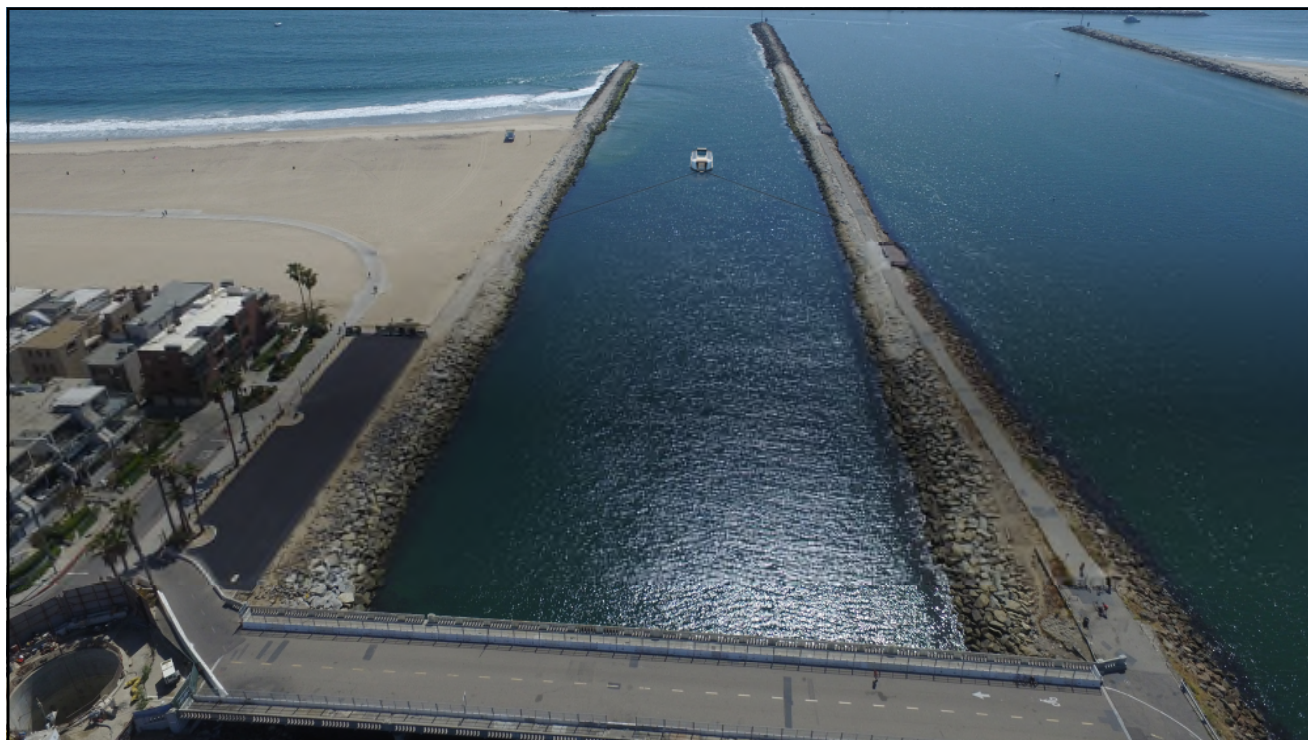
6

Ballona Creek Trash Interceptor Pilot Project

- Partnership with The Ocean Cleanup established in 2019
- Four Interceptors currently deployed worldwide
- Anticipated to deploy in Ballona Creek in Fall 2022
- Anticipated to run through April 2024
- Operations will be adjusted as needed



7



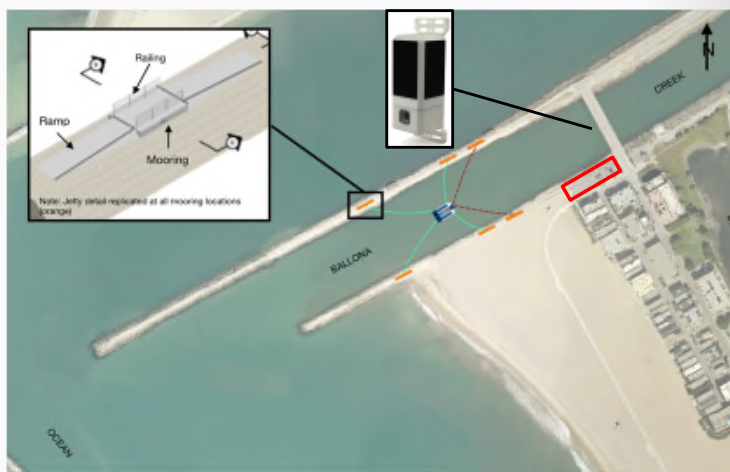
8



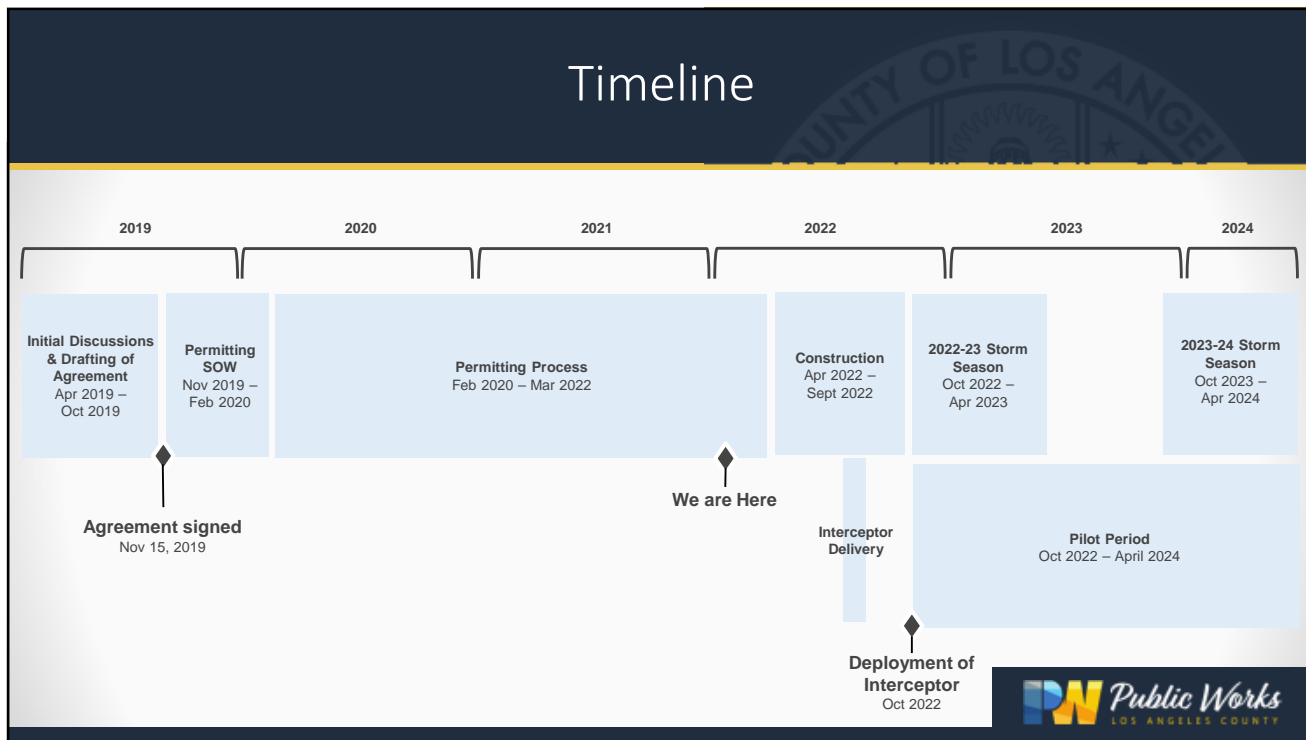
9

Construction and Deployment

- Components
 - Moorings
 - Monitoring System
 - Educational Signage
- Construction staging in the parking lot west of the bridge



10



11

What are your concerns?

- Lighting
- Noise
- Odors
- Rodents/ Pests
- Location

Image of Dominican Republic Deployment

Public Works
LOS ANGELES COUNTY

12

Lighting

- White navigation lights for safety purposes
- LED strips around opening of canopy
- Reflective ribbon may be used to deter birds



13

Noise

- Minimal mechanical components
- Conveyor belt operation
 - 60-70 decibels at the Interceptor
- Noise Analysis shows noise level is generally below ambient noise levels

Operational Noise Analysis

Noise Sensitive Receptor	Period	Pilot Project Noise Level at Receptor (Leq dBA)	Average Ambient Noise Level at Receptor (Leq dBA)	Pilot Project plus Ambient Noise Levels at Receptor (Leq dBA)	Increase at Receptor with Pilot Project (Leq dBA)
Residential Area	Day	50.9	64.5	64.7	0.2
	Evening	50.9	61.0	61.4	0.4
	Night	50.9	60.7	61.1	0.4

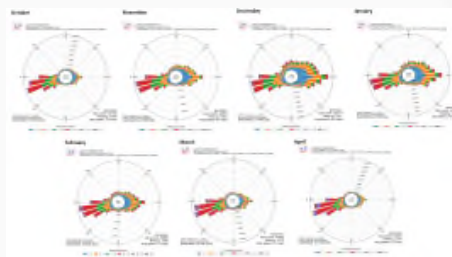


14

Odors and Rodents/Pests

- **Odors**

- Perforated bins to minimize standing water
- Trash expected to be 75% inorganics
- Odors anticipated to be localized
- Average wind direction towards East/Northeast



- **Rodents and other pests**

- No rodents in other Interceptor deployments
- Flies and other insects may be present but are expected to be localized on Interceptor, minimized by perforated bins



15

Placement/Deployment Considerations



16

Constraints Summary



Upstream Placement Issues

- ⊖ Environmental impacts
- ⊖ Stakeholder conflicts
- ⊖ Preservation of recreational uses
- ⊖ Operational/ maintenance constraints
- ⊖ Deployment constraints



Updates Since September 2021 Meeting

- Analysis of alternative locations
 - Locations upstream and adjacent to Ballona Creek
 - Design Considerations – Mooring system designed to breakaway to avoid permanent damage to levees.
 - Cost for new Pacific Ave Bridge: ~\$18 million
- Additional Outreach
 - UCLA/LMU/Youth Rowing Team – Conflicts with Rowing Operations
 - US Army Corp of Engineers – Permitting and Levee Modifications



Next Steps/Contact Info

At-Large Community Meeting: February 2022 (TBD)

Contact Us: BallonaInterceptor@pw.lacounty.gov

Visit our Website: pw.lacounty.gov/swp/BallonaCreek



19

Q&A Segment

Questions/Comments?

BallonaInterceptor@pw.lacounty.gov

pw.lacounty.gov/swp/BallonaCreek



20